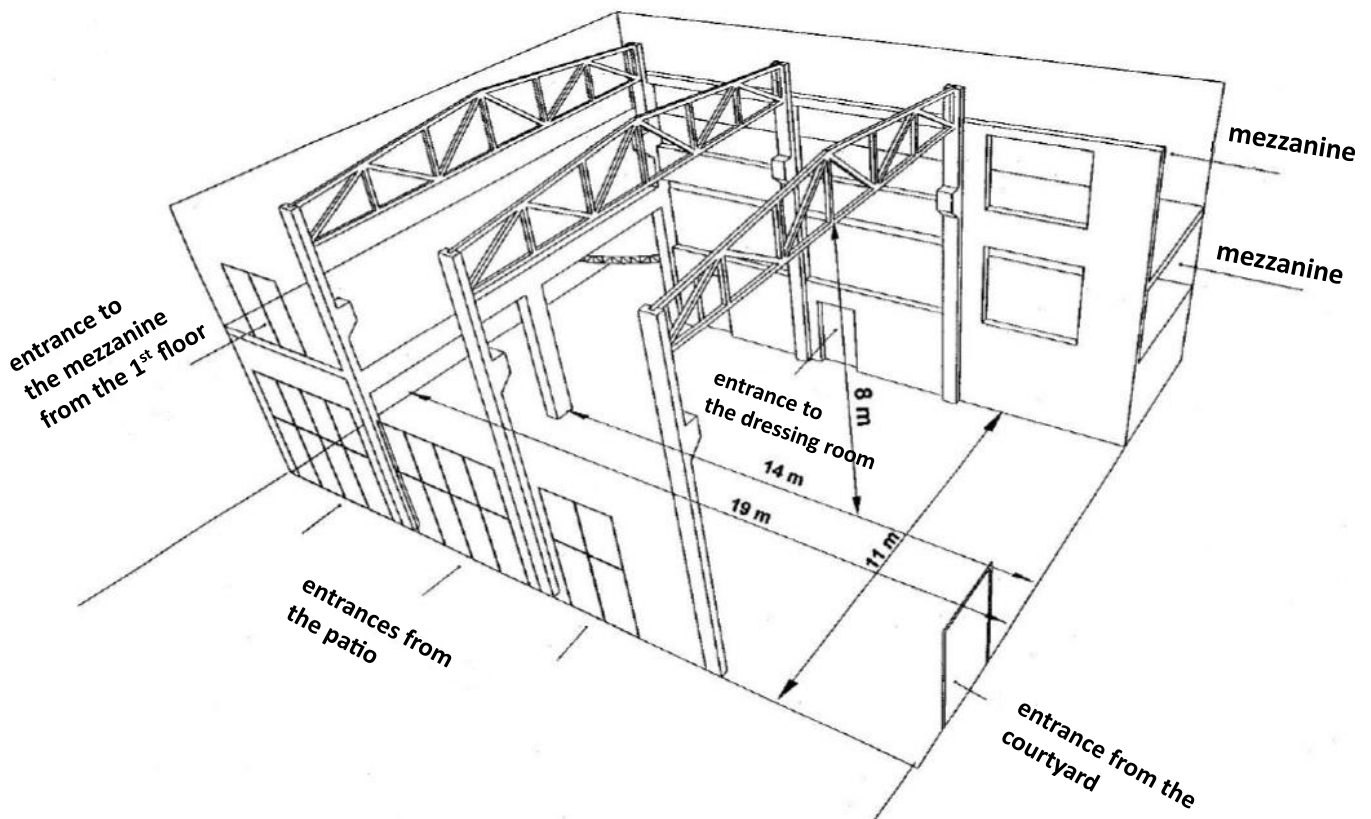




THEATRE-CONCERT HALL (SUWNICOWA HALL)

DIMENSIONS OF THE SUWNICOWA HALL AND ITS EQUIPMENT:

- **Performance space:** 10 m x 9,5 m
- **Height (to the grid):** 6 m
NOTE: it is not possible to perform with movable elements that require ropes attached to the ceiling (no stage barrel)
- **Equipment:**
 - black or white backdrop screen (height: 6 m)
 - black side curtains
 - black or white ballet floor (10 x 10 m)
- **Tiered audience seating:** 80 seats



SOUND EQUIPMENT		
CONSOLE		
1.	ALLEN & HEATH DLIVE C3500 (CDM64)	1
FRONT SYSTEM		
1.	NEXO GEO S12 (6 per side)	12
2.	NEXO CD18	4
3.	NEXO NXAMP4x4	3
MONITOR SYSTEM		
1.	NEXO P12	6
2.	NEXO NXAMP4x2MK2	2
WIRELESS MICROPHONES		
1.	SHURE QLXD4	2
2.	SHURE QLXD2/Beta58	2
3.	SHURE QLXD1 or DPA4288 (headset)	2
4.	IEM SENNHEISER G4	6
DYNAMIC MICROPHONES		
1.	SHURE SM 58	7
2.	SHURE BETA 58A	2
3.	SHURE SM 57	5
4.	BEYERDYNAMIC M88	1

5.	SENNHEISER E906	1
6.	SHURE BETA 52A	1
7.	SENNHEISER E 602	1
8.	AUDIX D6	1
9.	SENNHEISER e604	4
10.	ELECTRO-VOICE RE20	2
11.	SENNHEISER MD 421	2
12.	SENNHEISER MD 441	1
CONDENSER MICROPHONES		
1.	NEUMANN KM 184	2
2.	SCHOPES MK4	2
3.	AUDIO-TECHNICA ATM 33A	2
4.	SHURE SM 81	1
5.	AKG 451B	1
6.	AUDIO-TECHNICA AT4040	2
7.	AKG C414	2
8.	SHURE BETA 91	1
9.	SHURE BETA A98D	4
10.	DPA 4099	3
11.	ATM 350	4

LIGHTING EQUIPMENT

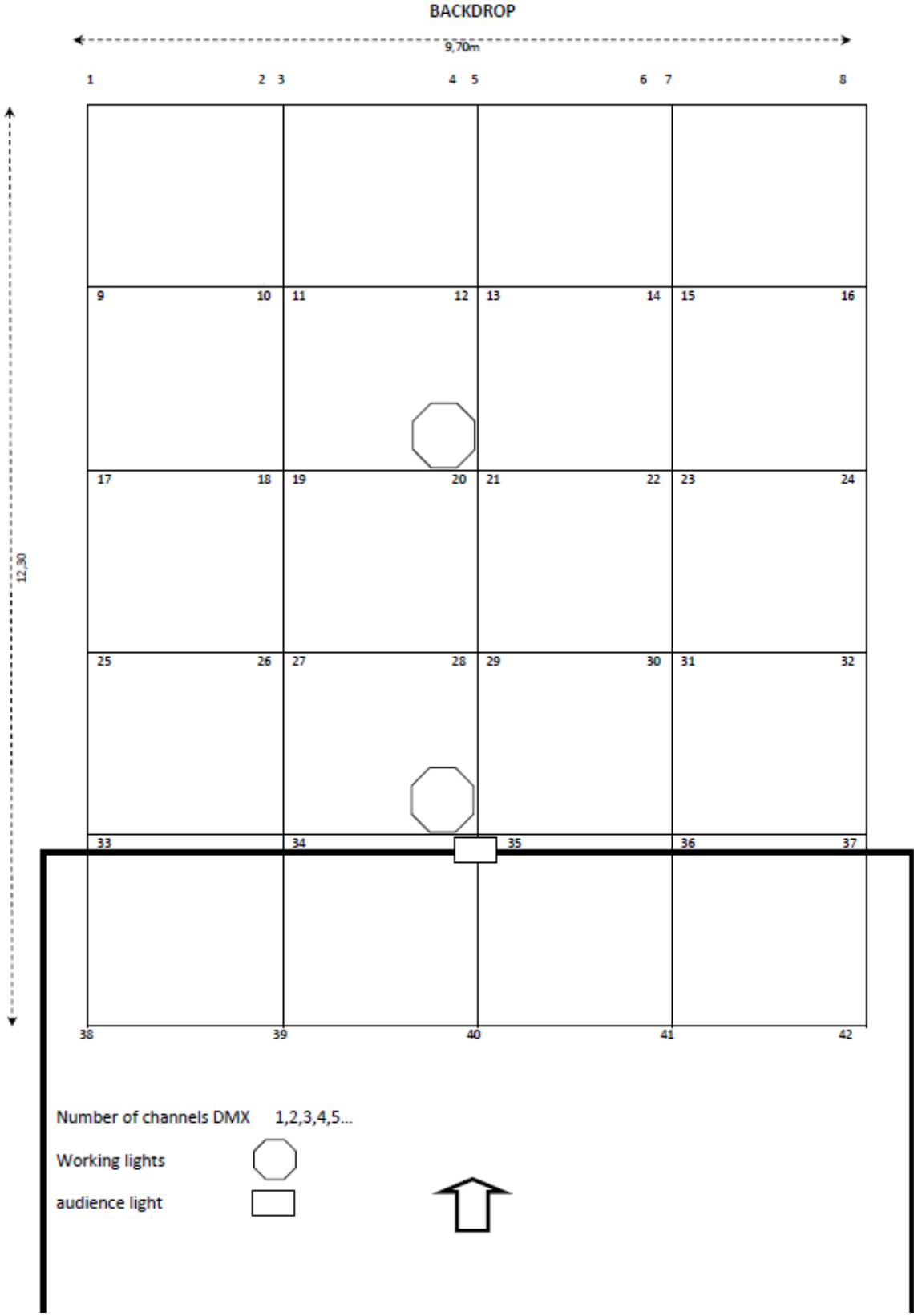
STAGE LIGHTS

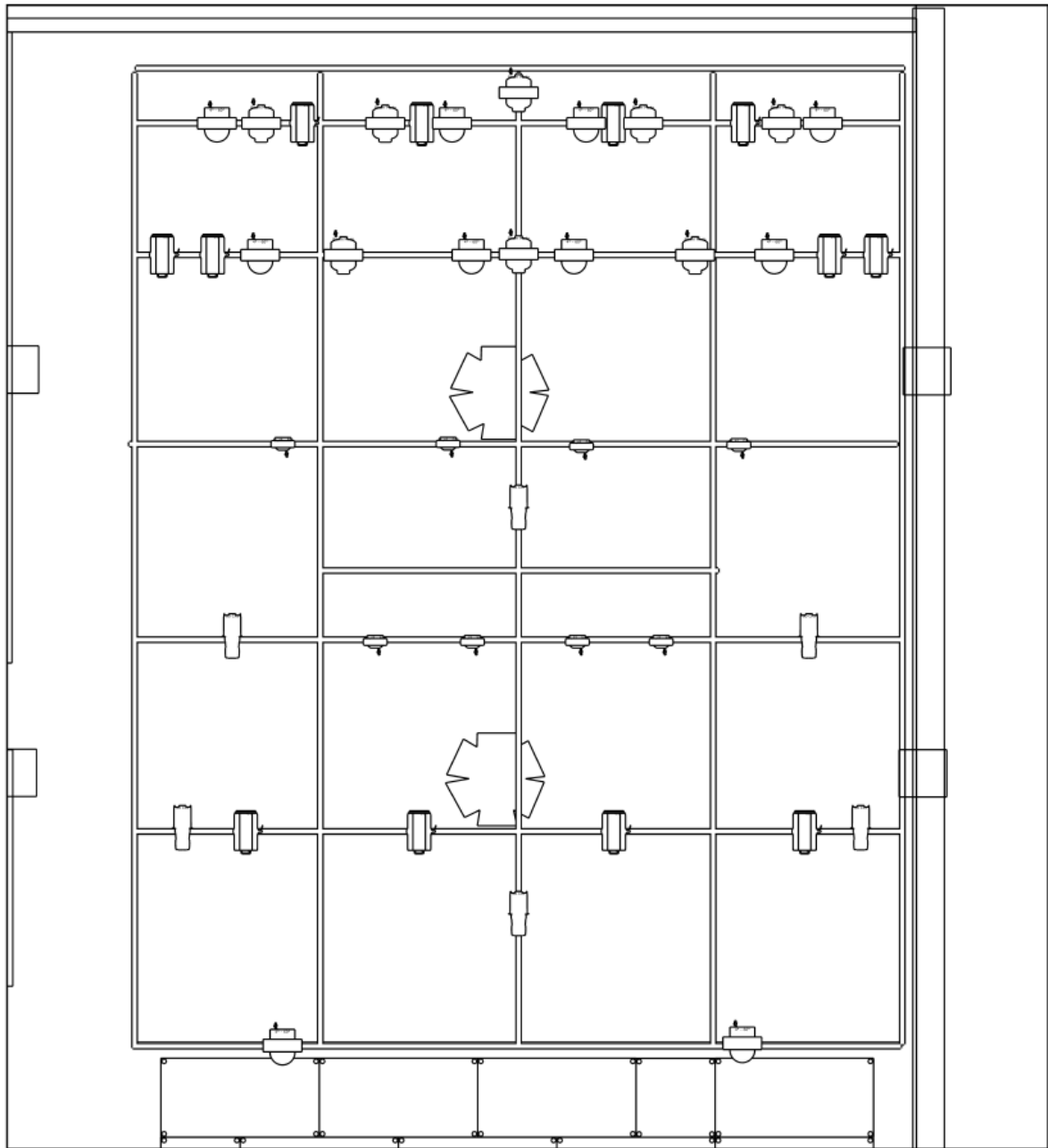
1.	ADJ VIZI BSW 300 SPOT (back light mounted fixed)	8
2.	ADJ VIZI BSW 300 SPOT (free mount)	4
3.	BRITEQ CIRRUS II WASH (back light mount)	8
4.	BRITEQ CIRRUS II WASH (front light mount)	2
5.	MARTIN MAC AURA WASH (top light mounted fixed)	8
6.	ADB PC A 56 650W + barndoor	6
7.	ADB PC C 103 1000W + barndoor	12
8.	ADB PROFILE 1000W	2
9.	FRESNEL 1000W + barndoor	5
10.	EUROLITE PAR 64 1000W	25
11.	ADB PROFILE EUROPE DVW 105 1000W 38°- 57° (iris+ gobo holder A size)	2
12.	ETC PROFILE SOURCE FOUR ZOOM 750W 25°– 50° (iris + gobo holder B size)	6
13.	ASYMMETRIC FLOODLIGHT / NAŚWIETLACZ ASYMETRYCZNY AHR 1000 A04A 1000W + barndoor	4
14.	SHOWTEC SUNSTRIP ACTIVE 500W	8
15.	MY METHOD CLONE 230W	12
LIGHTNING CONSOLE		
1.	MA Lightnng grandMA2 Command Wing on PC	1

DIMMER		
1.	DIMMER AGAT 12x2,5 kW	5
2.	DIMMER AGAT 6x2,5 kW	2
HAZER		
1.	HAZEBASE BASE HAZER PRO	2
2.	ANTARI M-8	1
LIGHTING STANDS		
1.	STAIRVILLE LIGHTING STAND 1,50m–3m (maksymalne obciążenie 30 kg)	4
2.	PODSTAWKI	10
PROJECTION SCREENS		
1.	NEC PA1004UL	1
2.	NEC PE455UL	1
EKRANY PROJEKCYJNE		
1.	PORTABLE FOLDING - FRAME PROJECTION SCREEN WITH NET SCREEN WIDTH 600 CM / GROSS SCREEN WIDTH 620 CM	1
2.	PORTABLE FOLDING - FRAME PROJECTION SCREEN WITH NET SCREEN WIDTH 300 CM / GROSS SCREEN WIDTH 320 CM	1

LIGHT GRID

located at the height of 6 m, non-moveable





Key symbols

-  Europe C 103 (12)
-  BTX-Cirrus II (10)
-  Vizi BSW 300 (8)
-  MAC Aura (8)
-  Source 4WRD Zoom 25°-50° (6)

